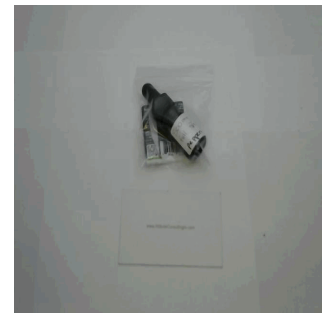




Customer: Boulder Hemp
Customer Sample ID: 500mg Peppermint 30mL - D0A0AAS thru J0A0AAS
Laboratory Number: 20E0012-05

Density: 0.9216



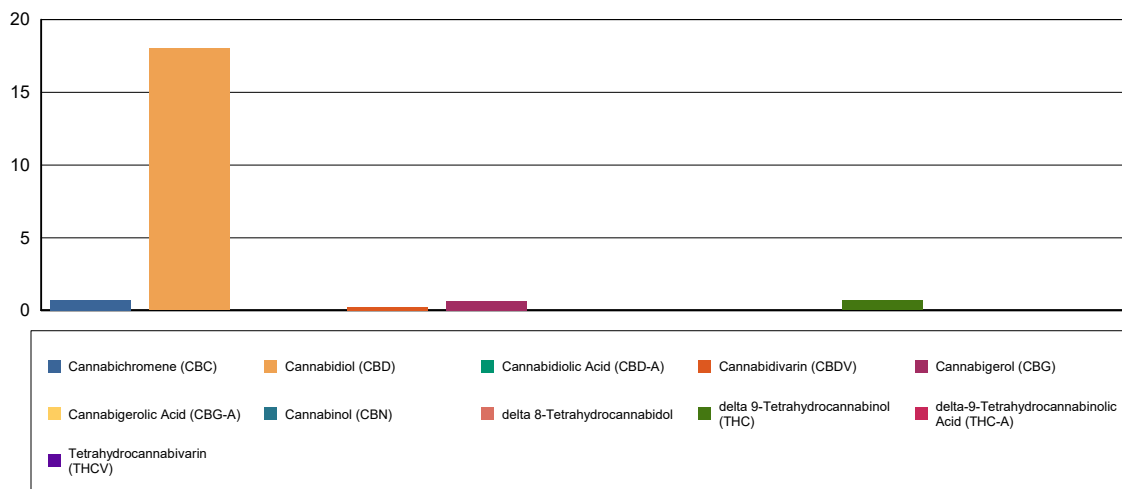
Cannabinoid Profile

Extraction Technician: DF
Analytical Chemist: CB

Extraction Date(s)	Analysis Date(s)
5/1/2020	5/2/2020

Cannabinoids (HPLC)		Results	
	LOD (mg/mL)	%	mg/mL
Cannabidivarin (CBDV)		0.02	0.224
Cannabidiolic Acid (CBD-A)	<0.090		
Cannabigerolic Acid (CBG-A)	<0.090		
Cannabigerol (CBG)		0.06	0.620
Cannabidiol (CBD)		1.80	18.0
Tetrahydrocannabivarin (THCV)	<0.090		
Cannabinol (CBN)	<0.090		
delta 9-Tetrahydrocannabinol (THC)		0.07	0.687
delta 8-Tetrahydrocannabidol	<0.090		
Cannabichromene (CBC)		0.07	0.716
delta-9-Tetrahydrocannabinolic Acid (THC-A)	<0.090		
Cannabinoids Total		%	mg/mL
Max Active THC		0.07	0.69
Max Active CBD		1.80	18.00
T.Active Cannabinoids		2.00	20.00
Total Cannabinoids		2.03	20.30
Ratios			
26.21:1 CBD to THC		0.04:1 THC to CBD	

Cannabinoid (mg/mL)



Reporting Limits will vary based on sample extraction weight used for the analysis.

Altitude Consulting, LLC utilizes NIST traceable Reference Standards and Certified Reference Material to calibrate analytical instruments along with proven analytical methods. The methods are applied in the most ethical manner following good laboratory practice guidelines. The results of this report are based solely on the sample submitted and cannot be reproduced.